

Kitakyushu City's Challenge toward a Low-carbon Society

— Kitakyushu Smart Community Creation Project —



Cogeneration, hydrogen, sunlight, wind power, etc.
Make smart use of a variety of energy



Backbone power of Higashida Area using natural gas



Fuel cell of the hydrogen demonstration house (Higashida H2)



Kitakyushu hydrogen station

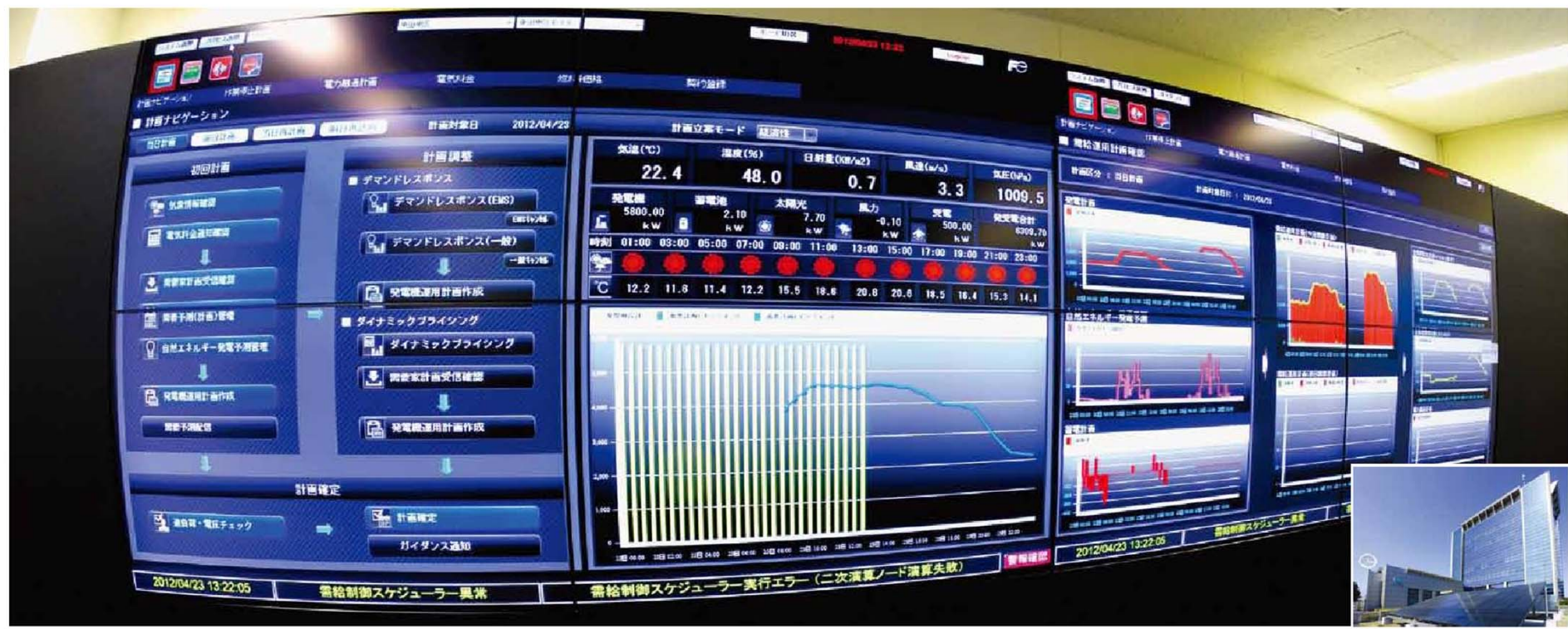


Wind-power generation of Kitakyushu Environment Museum



Photovoltaic generation panels installed on roofs of museum, company dormitory and condo in the Higashida street

Energy Visualization
Smart management by citizen



Optimization of supply and demand of regional electric power by CT (City Energy Management System (CEMS))

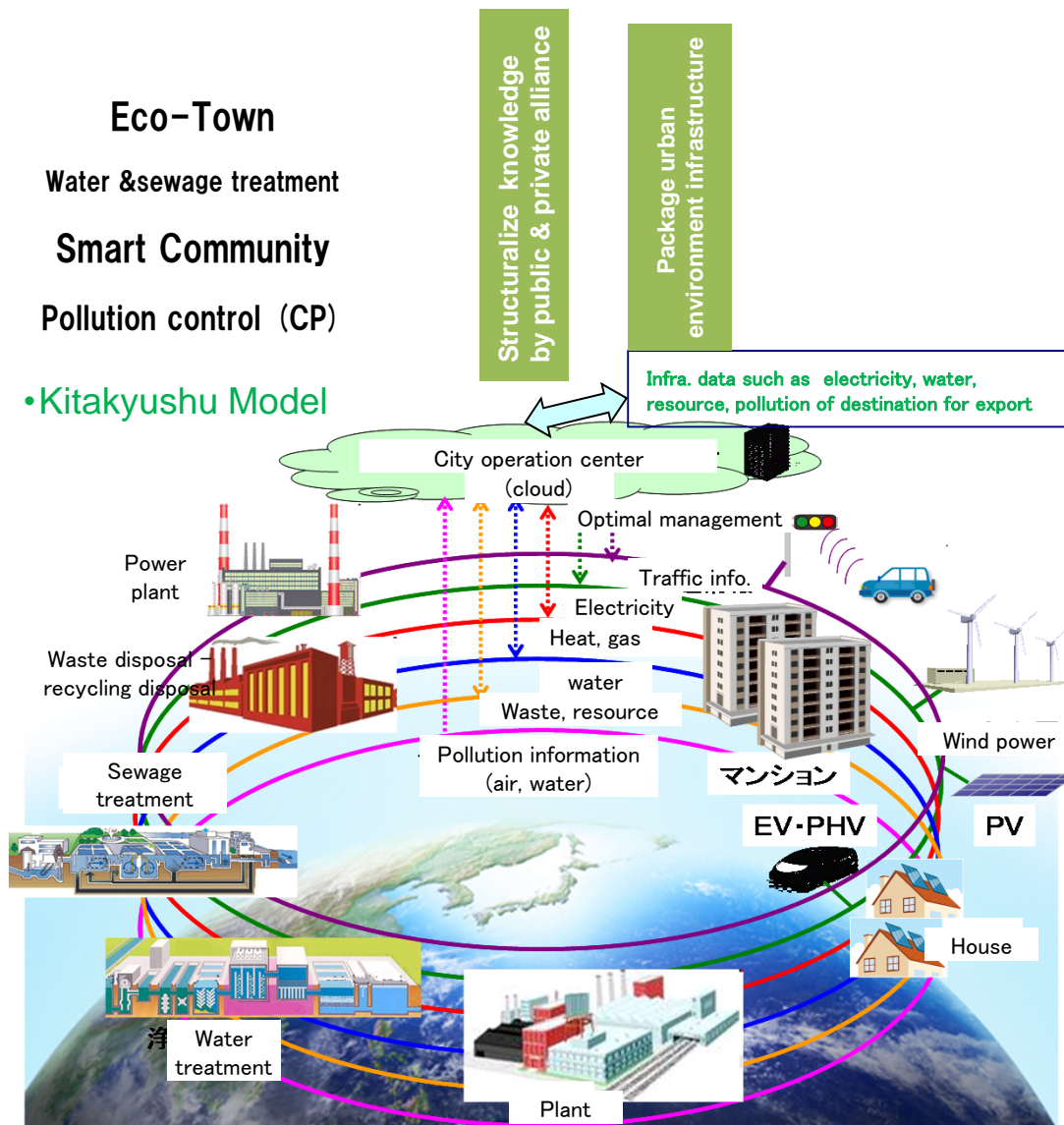
Smart community center in the Kyushu Human Media Creation Center

Solution : Deployment package oriented environment business in Asia by 「Asian Center for Low Carbon Society」

Public-private initiatives in the 「Asian Center for Low Carbon Society」 to integrate technology and know-how related urban environment infrastructure to commercialize in accordance with the specific needs (package)

◆Export Hub of Urban Environment Infrastructure

◆Creation of Green City (environment-conscious city)



International Environmental Cooperation (Indonesia)

A joint statement was made in March 2011 on a strategic environmental partnership between Surabaya and Kitakyushu.



(Left: The Honorable Tri Rismaharini, Mayor, City of Surabaya)