

MAP OF ZONES SUBJECT TO EVACUATION AT TIMES OF TSUNAMI

This map shows the zones assumed to be subject to tsunami inundation as well as evacuation facilities in order to make a swift evacuation at times of tsunami.

Advance preparation for tsunami

Know the level of the land you live your daily life. In order to save yourself from the tsunami, it is important to evacuate to a higher ground sooner. Make sure you know the height (above sea level) of your sphere of life and the places you visit often, so that when you feel a strong tremor from the earthquake or receive information such as tsunami alert, you can take a calm action.

Know where the evacuation shelters are.

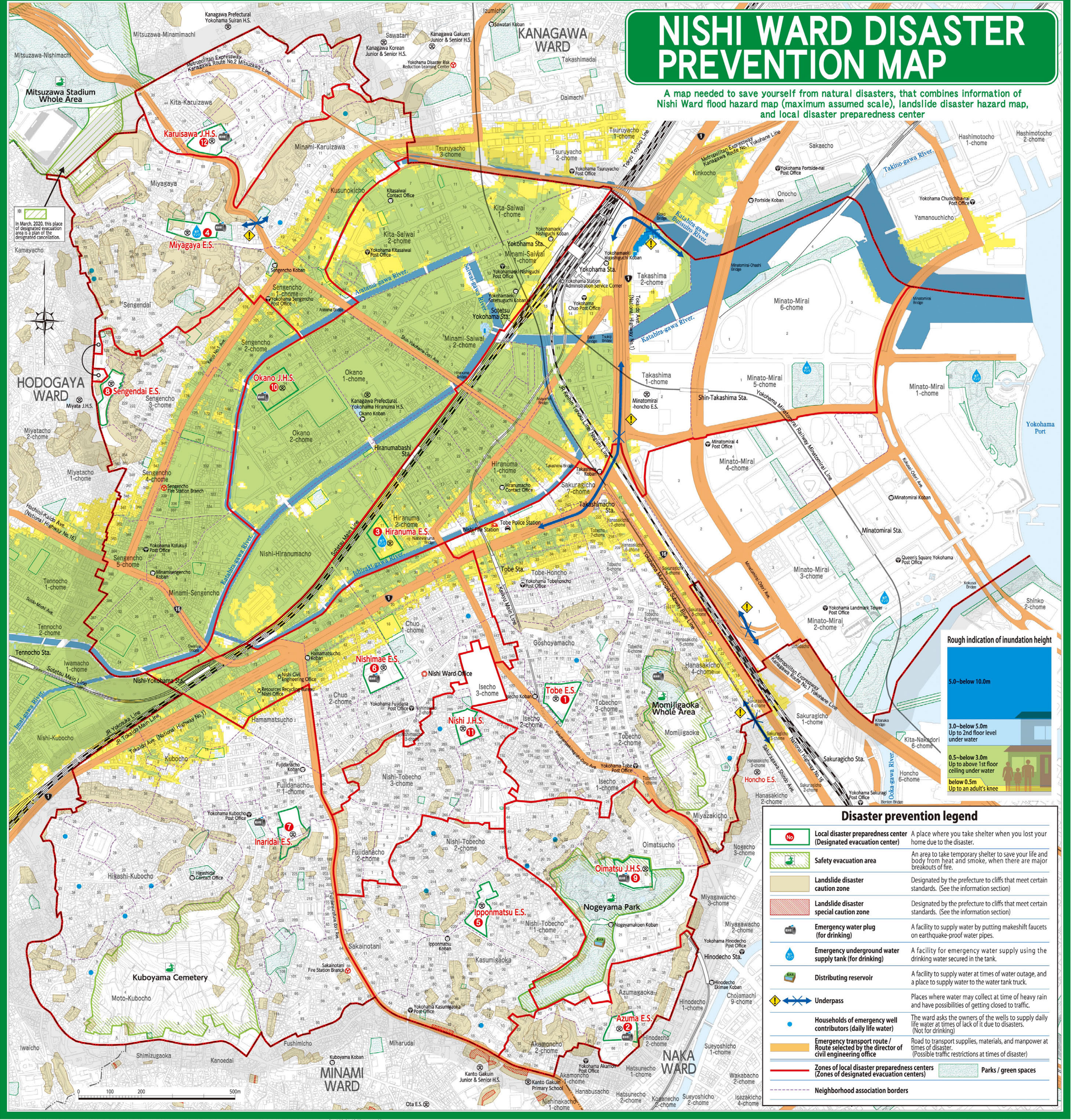
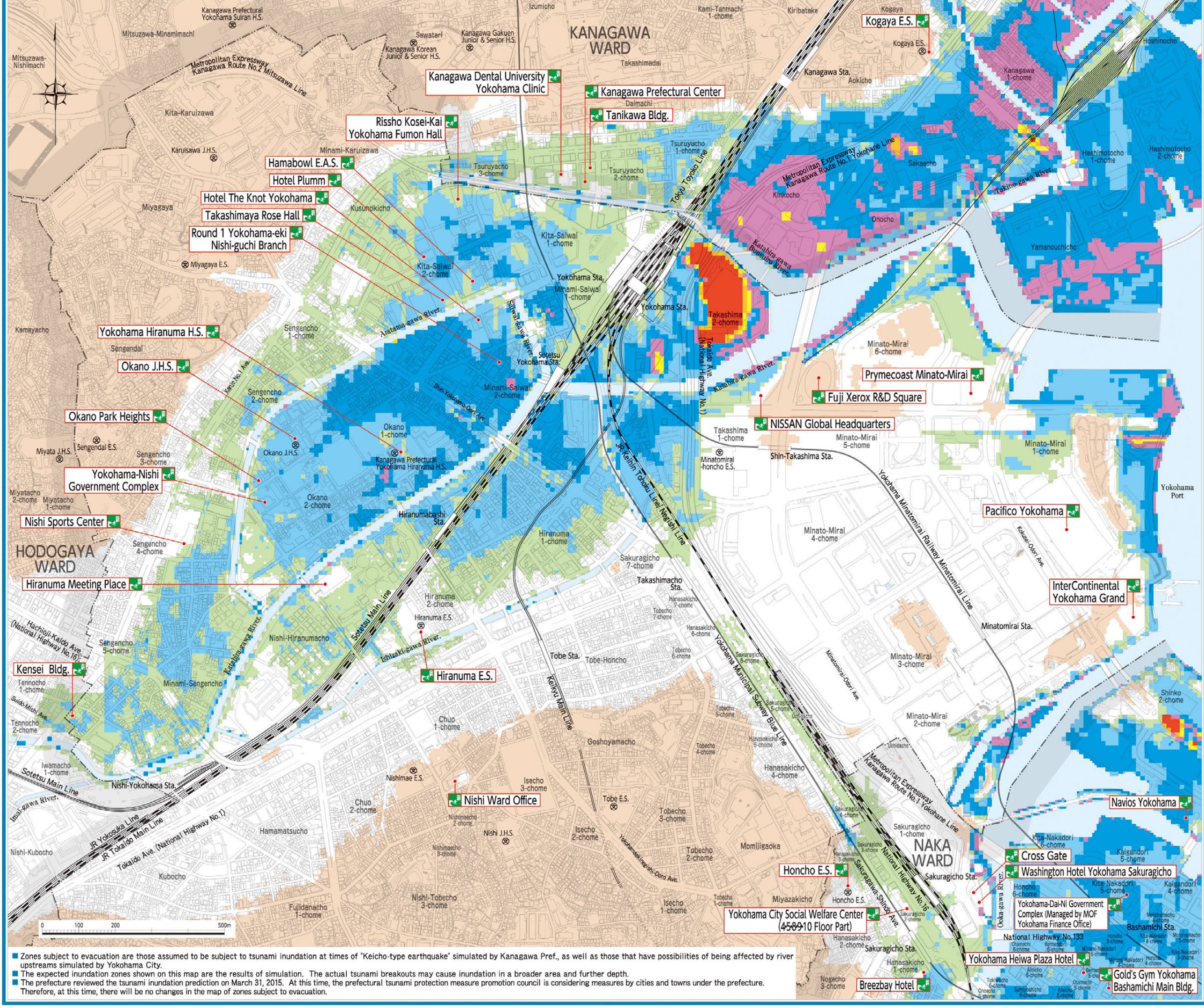
It is also important to know the locations of the higher grounds and sturdy buildings within your sphere of life and suitable for evacuation.

Rough indication of inundation heights

- 5m or higher
- 4m or higher ~ lower than 5m
- 3m or higher ~ lower than 4m
- 2m or higher ~ lower than 3m
- 1.2m or higher ~ lower than 2m
- 0.5m or higher ~ lower than 1.2m
- 0m or higher ~ lower than 0.5m

Above sea level mark legend

- Zones of 5m above sea level or higher
- Tsunami evacuation facility



NISHI WARD DISASTER PREVENTION MAP

A map needed to save yourself from natural disasters, that combines information of Nishi Ward flood hazard map (maximum assumed scale), landslide disaster hazard map, and local disaster preparedness center

EARTHQUAKE AND TSUNAMI

Be informed in advance of the methods and places to evacuate and start stockpiling so that you can take actions appropriate for the situation at times of earthquake.

Methods to evacuate

Evacuate according to disaster situation!

Home
When your home building does not have danger of fire or collapse, you do not have to venture evacuation.

Safety evacuation area
An area to take temporary shelter to save your life and body from heat and smoke, when there are many breakouts of fire that spread widely.

Temporary evacuation center
A place where people in the neighborhood gather to acknowledge the disaster situation of the surroundings and make appropriate evacuations.

Local disaster preparedness center (Designated evacuation center)
A place where you take shelter when you cannot go home due to house collapse, etc.

Issuance of tsunami warnings, etc.
High ground of 5m or higher above sea level or 3rd floor or higher of a sturdy building such as RC-built

Yokohama City designates facilities in the areas where inundation is assumed and the areas around, and make efforts to secure evacuation sites.

WIND AND FLOOD DAMAGE

Typhoons and torrential rains may cause landslides and floods. Check what you need to do when orders such as evacuation recommendations have been issued.

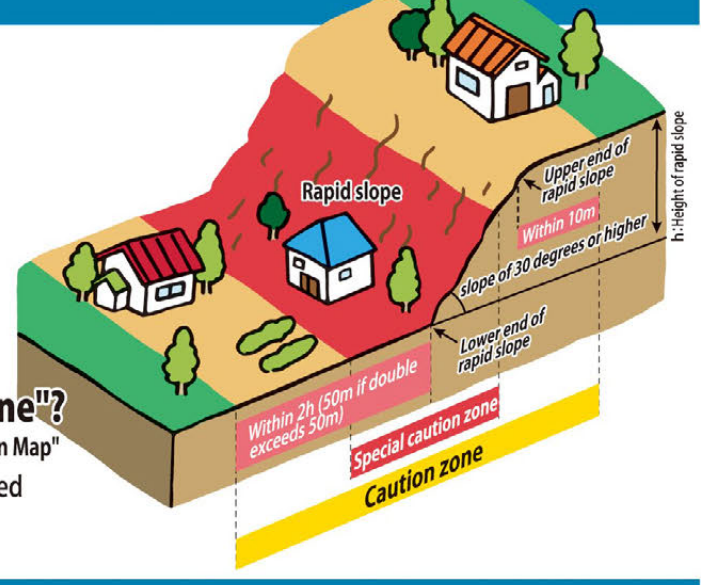
Landslide

What is a "landslide disaster caution zone"?
See "Nishi Ward Disaster Prevention Map"
A zone where, at times of rapid slope slides, risks are recognized on the residents' lives or bodies.

What is a "landslide disaster special caution zone"?
See "Nishi Ward Disaster Prevention Map"
A zone where, at times of rapid slope slides, severe risks are recognized on the residents' lives or bodies.

River flood

What is a "flood/inundation-assumed zone"?
See "Nishi Ward Disaster Prevention Map"
A zone where inundation is assumed at times of river flood.



Stockpiles

Keep at least 3 days' worth of stockpiles!
Stockpiles are necessary to go about as evacuees at home and other places when electricity, gas, water/sewage, and material flows are suspended due to a disaster. Purveyance of food and commodities becomes difficult right after the breakout of the disaster; generally speaking, support from the government do not reach at least for 3 days. Are you capable to survive the 3 days? Check on your stockpiles once again.

Water
It is said that one person will need 3 liters of water x 3 days' worth of drinking water, which makes 9 liters. Prepare for water in accordance with the number of your family members. Also secure daily life water for washing hands, etc.

Food
Prepare for 9 meals per person of preservative food, such as easily eatable instant foods, canned foods, and vacuum packed foods. If you have a gas cartridge tabletop stove, you can heat the food even the lifelines are suspended.

Portable toilets
Prepare for 15 times' worth per person (5 times/day x 3 days) of portable toilets (coagulator-and-bag packages).

Others
Prepare for portable radio, flashlight (and extra batteries), and cash, and if necessary, an extra pair of glasses, household medicines, allergy-free foods, etc.

Running stock cycle
Save: Stockpile a little extra amount.
Eat: Consume older ones first.
Buy: Restock the amount you consumed.

Evacuation recommendation, etc.

Follow orders such as the evacuation recommendation to take actions!
It is important to know the characteristics of your region and be informed of the ways to evacuate just in case.

Alert level 4
Evacuation instruction (urgent)
The situation is even worse, with the actual breakout of a disaster. Very high risks of human damage.

Alert level 4
Evacuation recommendation
Damages from the disaster is expected. Risks of human damage is higher.

Alert level 3
Evacuation Preparation / Start of Evacuation for the Elderly
Evacuation recommendation or evacuation instruction (urgent) is expected to be issued.

Even if the evacuation recommendation etc. is yet to be issued, there are possibilities of landslides and inundations. Try to take advance actions, such as evacuating to a safe place voluntarily when you feel the danger. When disaster occurrence information of Alert level 5 is announced, it is the situation that a disaster has already produced. Take the best action to protect a life.

LIST OF LOCAL DISASTER PREPAREDNESS CENTERS (DESIGNATED EVACUATION CENTERS)

School	Relevant neighborhood associations	Block / Street names
1 Tobe E.S. 2-115 Isecho Phone: 231-4515	Sakuragicho, Nishi-Hanasakicho, Miyazakicho, Tobe 1/2/3, Tobe 4, Tobe 5-chome, Tobe 6/7, Ihihaki, Tenjincho, Kobai 2, Kobalcho, Goshoyamacho, Isecho 1-chome, Isecho 2-chome, Isecho 2/3-chome, Uehara-Tobu, M.M.Towers, Yokohama Momijizaka Residence, Minatomirai Mid-Square The Tower Residence	Tobe-Honcho, Goshoyamacho, Tobecho 1-7-chome, Hanasakicho 4-7-chome, Sakuragicho 4-6-chome, Sakuragicho 7-chome (excluding 4th), Momijizaka, Isecho 1-2-chome, Isecho 3-chome (partially), Nishi-Tobecho 2-chome 117-169 (excluding part of 144 and 147-151), Minato-Mirai 1-4-chome, Miyazakicho
2 Azuma E.S. 59 Azumagaoka Phone: 231-4846	Azumagaoka, Azumagaoka-Seibu, Akamoncho 2-chome	Azumagaoka, Akamoncho 2-chome, part of 16 Kasumigaoka
3 Hiranuma E.S. 2-11-36 Hiranuma Phone: 322-1951	Takashima, Hiranuma-Nishi 1-chome, Hiranuma-Showa, Hiranuma-Higashi 1-chome, Hirani, Hiranuma-Helboku, Hiranuma-Sugoroku, Yokohama Sky Heights, Park Heights Yokohama, Monte Verde Yokohama	Hiranuma 1-2-chome, Sakuragicho 7-8, Takashima 1-2-chome, Minato-Mirai 5-6-chome
4 Miyagaya E.S. 6-7 Miyagaya Phone: 311-2468	Karuzawa, Sengendai, Sengencho 1-chome, Mitsuzawa High Town, Mitsuzawa Park House	Miyagaya, Minami-Karuzawa (partially excluded), Kasuragicho, Sengencho 1-chome, Sengendai (excluding 114/119/123/part of 125, 127-129)
5 Ipponmatsu E.S. 1-115 Nishi-Tobecho Phone: 241-7034	Hazawa-Seibu, Nishi-Tobecho 2-chome Daiichi, Kasumigaoka, Sakainotani-Tobu, Palacestage Yokohama	Nishi-Tobecho 1-chome 56-116, Kasumigaoka (excluding part of 116), Sakainotani 1-53, Nishi-Tobecho 2-chome 190 (partially)/193-251
6 Nishimae E.S. 2-27-7 Chuo Phone: 323-1801	Isecho 3-chome, Ise 4, Nishisugi, Ogida-Sugiyama, Chuo 1-chome, Sugiyamacho 4-chome, Nishimae 3-chome, Nishimaecho 4-chome, Fujidana 1-chome Tobu, Hamamatsucho	Chuo 1-2-chome, Nishimaecho 2-chome, Nishimaecho 3-chome, Sakuragicho 7-8, Fujidanacho 1-chome 28-50, Isecho 3-chome (partially)

Yokohama City designates public elementary and junior high schools as evacuation centers for earthquake disasters, and facilitates those locations as nearby "local disaster preparedness center" that function for the receiving and transferring of information as well as the stockpiling of disaster prevention materials and food. Basically you're supposed to evacuate to your neighborhood's evacuation center below, however, if it is dangerous to do so, evacuate to another nearby elementary or junior high school.

School	Relevant neighborhood associations	Block / Street names
7 Inaridai E.S. 2-220 Fujidanacho Phone: 231-1822	Fujidanacho 1-chome, Fujidanacho 2-chome Seibu, Motokubocho, Kubocho Daiichi, Kubocho Daini, Kubocho Daisan, Kubocho Daiyon, Kubocho Daigo, Higashi-Kubocho Toho, Higashi-Kubocho Todai, Higashi-Kubocho Toboku, Sakainotani Seibu, Hamamatsucho Tobu, Higashi-Kubocho	Kubocho, Moto-Kubocho, Higashi-Kubocho, Hamamatsucho 1-7, Fujidanacho 1-chome (excluding 28-50), Fujidanacho 1-chome 198-, Sakainotani 54-
8 Sengendai E.S. 3-237 Sengencho Phone: 211-6648	Sengencho 2-chome, Sengencho 3-chome, Sengencho 4-chome, Sengencho Kami 4-chome, Sengencho 5-chome, Minami-Sengencho Daiichi, Minami-Sengencho Daini, Minami-Sengencho Daisan, Nishi-Yokohama High Town	Sengencho 2-5-chome, Minami-Sengencho, Sengendai 114/119/123/part of 125/127-129
9 Oimatsu J.H.S. 12 Oimatsucho Phone: 241-5120	Nishi-Hiranumacho Miyamoto, Nishi-Hiranumacho Daini, Okano Kenwa, Okano 2-chome, Okano Gojo, Minami-Saiwai, Kita-Saiwai, Yokohama Towering Square, Clio Yokohama-Nishiguchi 2-Bankan	Oimatsucho, Nishi-Tobecho 1-chome 1-55
10 Okano J.H.S. 2-14-1 Okano Phone: 311-3210	Nishi-Hiranumacho Miyamoto, Nishi-Hiranumacho Daini, Okano Kenwa, Okano 2-chome, Okano Gojo, Minami-Saiwai, Kita-Saiwai, Yokohama Towering Square, Clio Yokohama-Nishiguchi 2-Bankan	Nishi-Hiranumacho 1-8, Okano 1-2-chome, Minami-Saiwai 1-2-chome, Kita-Saiwai 1-2-chome
11 Nishi J.H.S. 3-286 Nishi-Tobecho Phone: 231-0153	Nishi-Tobecho 3-chome, Fujidanacho 2-chome Tobu, Fujidana Prefectural Apartments, Nishi-Tobe 2-chome Daiyon	Nishi-Tobecho 2-chome, Isecho 3-chome (partially), Nishi-Tobecho 2-chome 144 (partially)/147-151/170-192 (excluding 190), Fujidanacho 2-chome (excluding 198-)
12 Karuisawa J.H.S. 24 Kita-Karuzawa Phone: 311-2523	Kita-Karuzawa Chu-Seibu, Mitsubishi Kita-Karuzawa, Kita-Karuzawa Mutsumi, Kita-Karuzawa Tobu, Lions Mansion Mitsuzawa-Koen, Mitsubishi Heavy Industries Kita-Karuzawa Company House, Master Hills Yokohama	Kita-Karuzawa, Minami-Karuzawa (partially)

※ The opening on evacuation centers in accordance with the issuance of evacuation recommendations etc. due to wind and flood damages such as typhoons depend on the scale and the situation of the disaster. Check the information on TV, radio, city website, disaster prevention e-mail newsletters etc. when you evacuate.